

## Electric Mini EV Cars 4 Wheel Compact Eco Friendly Vehicle Wuling Nano

Our Product Introduction

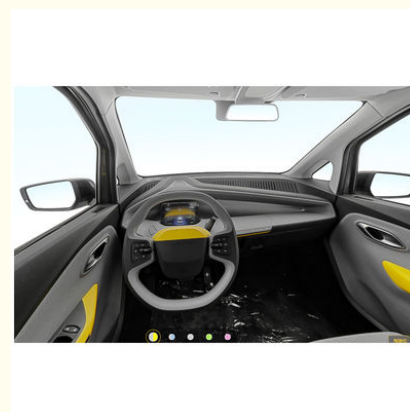
### Basic Information

- Place of Origin: Guangdong, China
- Brand Name: Chetianxia
- Model Number: Mini EV
- Price: \$2,145.00 - \$2,711.00/pieces
- Packaging Details: 1
- Delivery Time: 30
- Payment Terms: T/T
- Supply Ability: 1000 Piece/Pieces per Month



### Product Specification

- Product Name: Electric Car
- Color: Optional
- Energy Type: Pure Electric/100% Electric Car
- Body Structure: 3-door-2-seater
- Charging Time: 4.5 Hour
- Battery Type: Lithium Iron Phosphate Battery
- Level: Mini Car
- Length \* Width \* Height: 2497x1526x1616mm
- Port: Khorgos
- Highlight: electric mini ev cars , mini ev cars 4 wheel , compact eco friendly vehicle



### More Images



for more products please visit us on [evcar.cn](http://evcar.cn)

## Product Description

### China Wuling Mini Nano EV Electric Car New Energy Vehicles 4 Wheel

The Wuling Mini Nano EV Electric Car is a compact and eco-friendly vehicle designed for urban commuting. This innovative electric car offers an efficient and cost-effective solution to daily transportation needs, making it perfect for city dwellers looking for a convenient mode of travel.

With its sleek and modern design, the Wuling Mini Nano EV Electric Car stands out on the road, while its compact size allows for easy maneuverability in crowded city streets and tight parking spaces. The car's electric powertrain ensures zero emissions, making it an environmentally friendly choice that contributes to cleaner air quality.

Despite its small size, the Wuling Mini Nano EV Electric Car offers ample space inside for up to four passengers. The interior boasts a comfortable and ergonomic cabin with modern features, including a touchscreen infotainment system, Bluetooth connectivity, and a rearview camera for enhanced safety and convenience.

Powered by a reliable electric motor, this car delivers impressive acceleration and smooth handling, ensuring a pleasant driving experience. Its lightweight construction and advanced battery technology provide a decent driving range on a single charge, making it suitable for short commutes and everyday errands.

## Product Description





Wuling Nano

	301KM model	405KM model
Type	Mini Car	Mini Car
Drive	Pure electric	Pure electric
Time to market	2021.08	2021.08
NEDC Max. Range	301KM	405KM
Fast charge time (hours)	0.5	0.5
Slow charge time (hours)	-	-
Fast charge percentage	80	80
Maximum power (KW)	70	70
Motor (ps)	95	95
Maximum torque (N.m)	180	180
L*W*H(mm)	4070*1770*1570	4215*1770*1570
Body structure	5-door 5-seat	5-door 5-seat
Wheelbase (mm)	2700	2700
Motor type	Front PM/Sync	Front PM/Sync
Motor total power (kWh)	30.7	44.9
Battery Type	Lithium iron phosphate battery	Lithium iron phosphate battery
Front tire specification	195/60 R16	195/60 R16
Rear tire specification	195/60 R16	195/60 R16





The entire series comes standard with halogen headlights, which support height adjustment and delayed turn off functions, but LED daytime running lights are not available in the entire series.

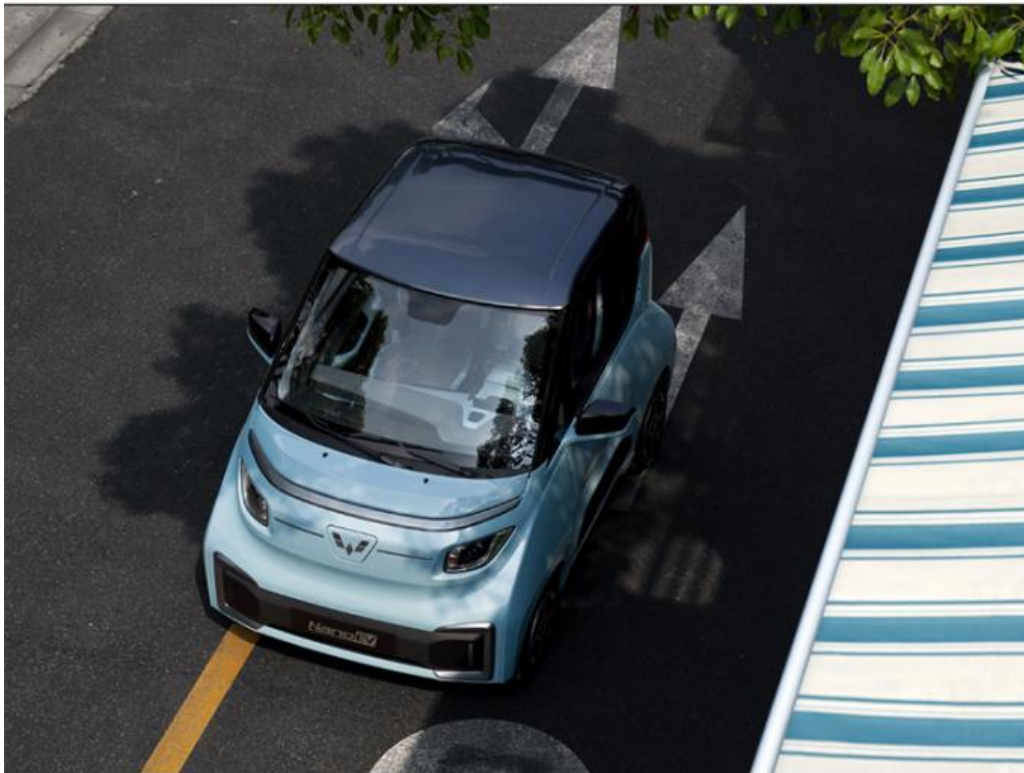
The Wuling NanoEV is equipped with a permanent magnet synchronous drive motor with a maximum power of 24 kW, a maximum torque of 85 Nm, and a comprehensive operating range of 305km.



Ultra 40% high-strength steel body



Although the Wuling NanoEV is equipped with a full LCD instrument panel, its functions are relatively limited and its display is not clear enough.





Brand new car with 0 KM mileage, please contact us for more details



NEW ENERGY VEHICLE CHARGING



CooperativeFactory





## FAQ

Q: Which brands of electric cars are you selling?

A: As a 20-year professional used car seller, we offer BYD,XPENG,NIO,Tesla,Volkswagen and all other brands that are manufactured or sold in China.

Q: Which payment terms do you accept?

A: We're flexible for payment terms, including T/T and Western-Union.

Q: What's the minimum order quantity?

A: 1 unit.

Q: What's the shipping type and how long will the delivery be?

A: By sea or by Train. Normally the delivery time is within 15 to 25 days, after receiving your deposit or L/C.

Q: Do you offer guarantee for the products? :

A:Yes, we offer 1 year warranty to our products.



**Shenzhen Chetianxia New Energy Vehicle Technology Co., Ltd.**

☎ 15323715629

✉ 1256265179@qq.com

🌐 evcar.cn

3F307, Building 5-8, Jinxiu Jiangnan Phase 4, Xinniu Community, Minzhi Street, Longhua District, Shenzhen City (Jinxiu Mingcheng)