

## Versatile Compact Electric Cars Eco Friendly Small EV Cars Vehicles Wuling Nano

Our Product Introduction

### Basic Information

- Place of Origin: Guangdong, China
- Brand Name: Chetianxia
- Price: \$2,680.00/pieces 1-9 pieces
- Packaging Details: 1
- Delivery Time: 30
- Payment Terms: T/T
- Supply Ability: 1000 Piece/Pieces per Month

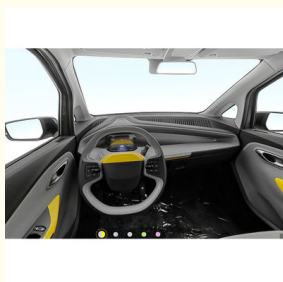


### Product Specification

- Product Name: Electric Car
- Color: Optional
- Energy Type: Pure Electric/100% Electric Car
- Body Structure: 3-door-2-seater
- Charging Time: 4.5 Hour
- Battery Type: Lithium Iron Phosphate Battery
- Level: Mini Car
- Length \* Width \* Height: 2497x1526x1616mm
- Port: Shenzhen
- Highlight: versatile compact electric cars, compact electric cars eco friendly, small ev cars vehicles



### More Images



for more products please visit us on [evcar.cn](http://evcar.cn)

## Product Description

### China Cheap Wuling Nano Mini Electric Car New Energy Vehicles EV Cars

**Compact and Eco-friendly:** The Wuling Nano Mini Electric Car is a compact and eco-friendly vehicle that is perfect for urban commuting. Its small size allows for easy maneuverability in crowded city streets, while its electric motor ensures zero emissions, making it an environmentally friendly choice.

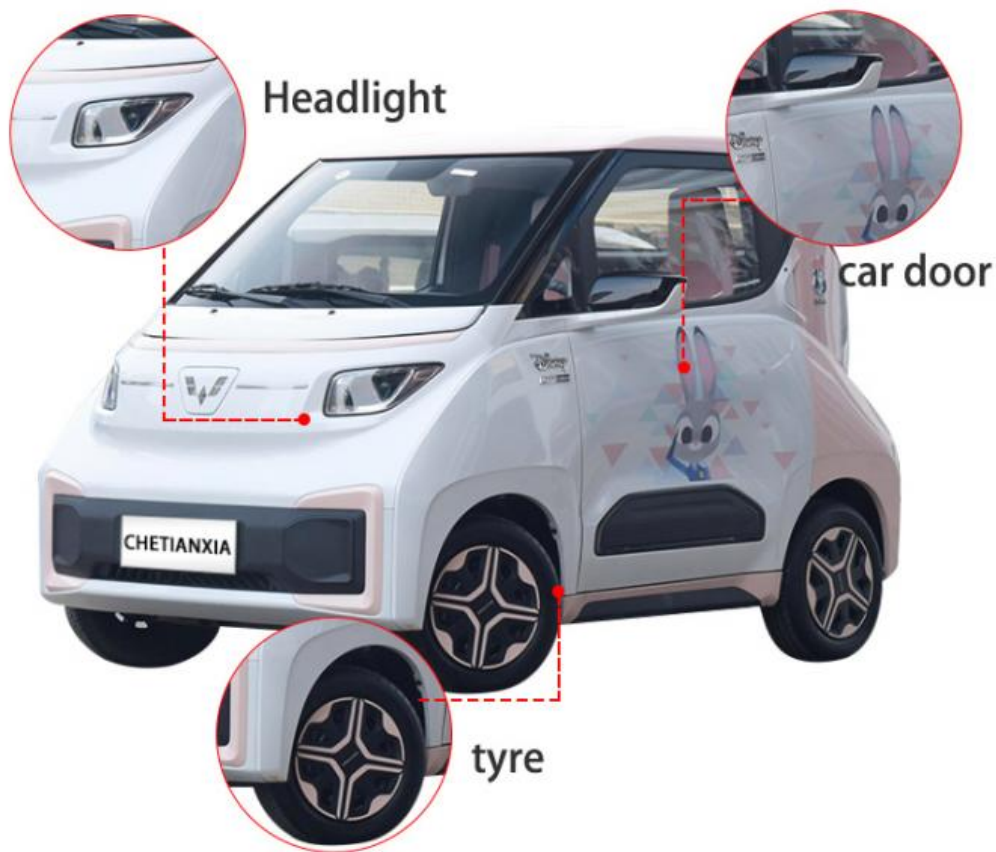
**Efficient and Cost-effective:** With its electric powertrain, the Wuling Nano Mini Electric Car offers great fuel efficiency, resulting in lower operating costs compared to traditional gasoline-powered cars. Say goodbye to expensive gas bills and hello to savings with this efficient and cost-effective vehicle.

**Practical and Versatile:** Despite its small size, the Wuling Nano Mini Electric Car offers surprising versatility. It features ample storage space and comfortable seating for up to four passengers, making it ideal for both daily commutes and weekend getaways. Whether you need to run errands or embark on a road trip, this practical car has got you covered.

**Innovative Technology:** Equipped with advanced technology, the Wuling Nano Mini Electric Car combines convenience and innovation. Its intelligent navigation system helps you find the best routes, while its touchscreen display provides effortless control over various features. Stay connected and entertained on the go with Bluetooth connectivity and smart entertainment options.

## Product Description





Wuling Nano

	301KM model	405KM model
Type	Mini Car	Mini Car
Drive	Pure electric	Pure electric
Time to market	2021.08	2021.08
NEDC Max. Range	301KM	405KM
Fast charge time (hours)	0.5	0.5
Slow charge time (hours)	-	-
Fast charge percentage	80	80
Maximum power (KW)	70	70
Motor (ps)	95	95
Maximum torque (N.m)	180	180
L*W*H(mm)	4070*1770*1570	4215*1770*1570
Body structure	5-door 5-seat	5-door 5-seat
Wheelbase (mm)	2700	2700
Motor type	Front PM/Sync	Front PM/Sync
Motor total power (kWh)	30.7	44.9
Battery Type	Lithium iron phosphate battery	Lithium iron phosphate battery
Front tire specification	195/60 R16	195/60 R16
Rear tire specification	195/60 R16	195/60 R16





The entire series comes standard with halogen headlights, which support height adjustment and delayed turn off functions, but LED daytime running lights are not available in the entire series.

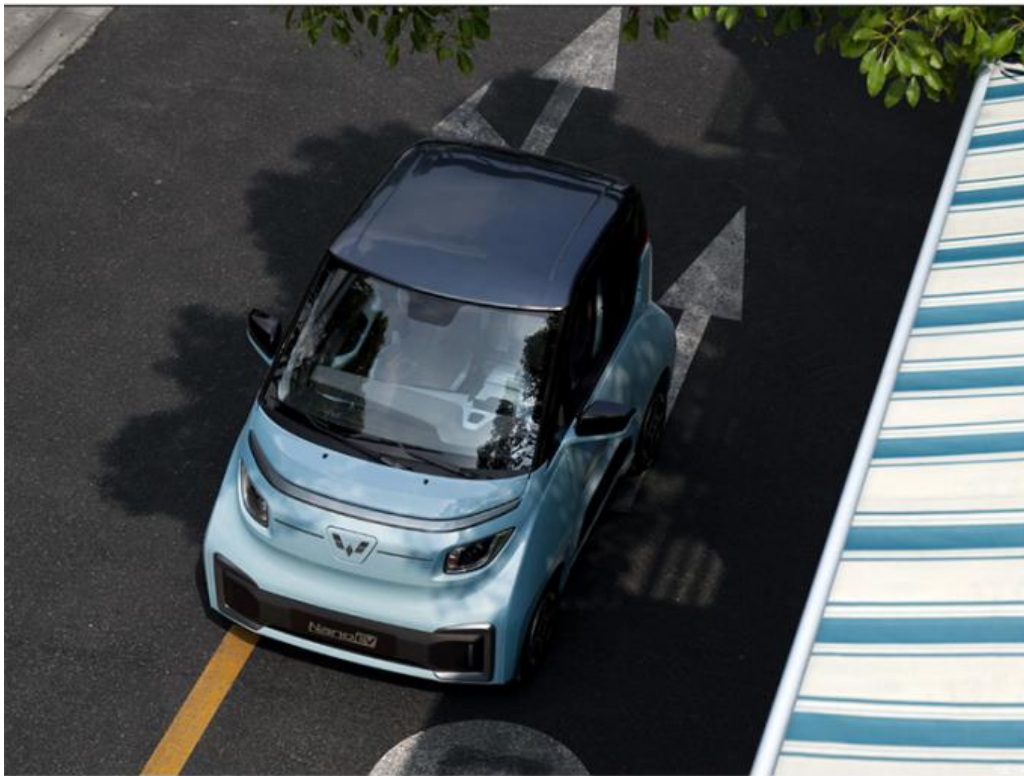
The Wuling NanoEV is equipped with a permanent magnet synchronous drive motor with a maximum power of 24 kW, a maximum torque of 85 Nm, and a comprehensive operating range of 305km.



Ultra 40% high-strength steel body



Although the Wuling NanoEV is equipped with a full LCD instrument panel, its functions are relatively limited and its display is not clear enough.



Brand new car with 0 KM mileage, please contact us for more details







## NEW ENERGY VEHICLE CHARGING



## CooperativeFactory





## FAQ

---

Q: Which brands of electric cars are you selling?

A: As a 20-year professional used car seller, we offer BYD,XPENG,NIO,Tesla,Volkswagen and all other brands that are manufactured or sold in China.

Q: Which payment terms do you accept?

A: We're flexible for payment terms, including T/T and Western-Union.

Q: What's the minimum order quantity?

A: 1 unit.

Q: What's the shipping type and how long will the delivery be?

A: By sea or by Train. Normally the delivery time is within 15 to 25 days, after receiving your deposit or L/C.

Q: Do you offer guarantee for the products? :

A:Yes, we offer 1 year warranty to our products.



**Shenzhen Chetianxia New Energy Vehicle Technology Co., Ltd.**



15323715629



1256265179@qq.com



evcar.cn

3F307, Building 5-8, Jinxiu Jiangnan Phase 4, Xinniu Community, Minzhi Street, Longhua District, Shenzhen City (Jinxiu Mingcheng)