

Modern Used Compact SUV 150KW Sustainable Electric Cars For Volkswagen

Our Product Introduction

Basic Information

- Place of Origin: Guangdong, China
- Brand Name: Chetianxia
- Minimum Order Quantity: 1
- Price: \$20,000.00/pieces 1-4 pieces
- Packaging Details: 1
- Delivery Time: 15
- Payment Terms: T/T
- Supply Ability: 100 Piece/Pieces per Month

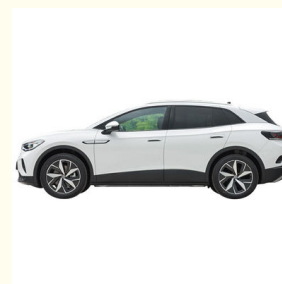
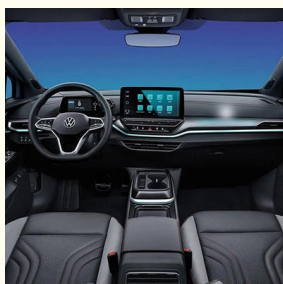


Product Specification

- Product Name: Sustainable Electric Car
- Color: Optional
- Body Structure: 5-door 5-seater SUV
- Max Speed: 160 Km/h
- Energy Type: Pure Electric/100% Electric Car
- Charging Time: 0.5 Hour
- Battery Type: Lithium Iron Phosphate Battery
- Length * Width * Height: 4612x1852x1640mm
- Port: Shenzhen
- Highlight: **used compact suv 150kw ,
150kw sustainable electric cars ,
modern used compact suv**



More Images



for more products please visit us on evcar.cn

Product Description

New Energy Vehicle VW ID4 Crozz Pro EV Electric Car For Volkswagen

The ID.4 features a rear-wheel drive layout or an available all-wheel drive configuration, depending on the market and specific version. It is equipped with an electric motor powered by a battery pack, and the range and performance specifications can vary depending on the battery size and configuration.

The ID.4 also includes various advanced features and technologies, such as a digital cockpit, touchscreen infotainment system, driver-assistance systems, and connectivity options.

The Volkswagen ID.4 is built on the modular electric drive matrix (MEB) platform, which is specifically designed for electric vehicles. It offers a spacious interior, modern design, and a range of electric driving capabilities.

Product Description



Headlight





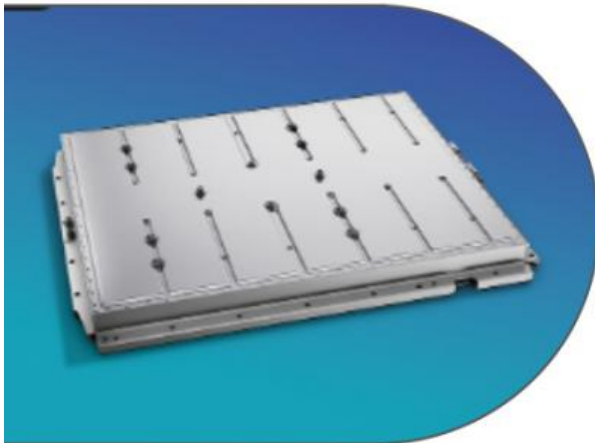
Engine	125KW	125KW	150KW	150KW
Power Type	Pure electric	Pure electric	Pure electric	Pure electric
level	Compact SUV	Compact SUV	Compact SUV	Compact SUV
Length×width×height(mm)	4592-1852-1629	4592-1852-1629	4592-1852-1629	4592-1852-1629
Body structure	Five-door, Five-seat	Five-door, Five-seat	Five-door, Five-seat	Five-door, Five-seat
Maximum speed (km/h)	160	160	160	160
Vehicle warranty policy	3 years or 100000 km	3 years or 100000 km	3 years or 100000 km	3 years or 100000 km
Battery Energy (kWh)	55.7kWh	55.7kWh	84.8kWh	84.8kWh
CLTC pure electric range (km)	425	425	600	600
Battery type	ternary lithium battery	ternary lithium battery	ternary lithium battery	ternary lithium battery



The diagram of over 29% hot formed steel plate * is provided as a schematic diagram

12 o'clock touch screen navigation system - Bluetooth phone





The schematic diagram shows the battery capacity of 84.80kWh



On the interior of the ID.4 CROZZ, the obvious traditional style may still be felt, but Volkswagen has also made every effort to innovate for the model, such as replacing a large number of traditional buttons with touch based interaction, equipping the car with a "rotary" gear shift structure, concentrating a large number of operating systems on the 12 inch high-definition central control screen, and equipped with AR HUD augmented reality head up display system.





Details Images



Brand new car with 0 KM mileage, please contact us for more details



NEW ENERGY VEHICLE CHARGING





CooperativeFactory



FAQ

Q: Which brands of electric cars are you selling?

A: As a 20-year professional used car seller, we offer BYD,XPENG,NIO,Tesla,Volkswagen and all other brands that are manufactured or sold in China.

Q: Which payment terms do you accept?

A: We're flexible for payment terms, including T/T and Western-Union.

Q: What's the minimum order quantity?

A: 1 unit.

Q: What's the shipping type and how long will the delivery be?

A: By sea or by Train. Normally the delivery time is within 15 to 25 days, after receiving your deposit or L/C.

Q: Do you offer guarantee for the products

A:Yes, we offer 1 year warranty to our products.



Shenzhen Chetianxia New Energy Vehicle Technology Co., Ltd.



15323715629



1256265179@qq.com



evcar.cn

3F307, Building 5-8, Jinxiu Jiangnan Phase 4, Xinniu Community, Minzhi Street, Longhua District, Shenzhen City (Jinxiu Mingcheng)