

BYD Small Electric EV Sedans 2023 Cutting Edge Safety Multi Function

Our Product Introduction

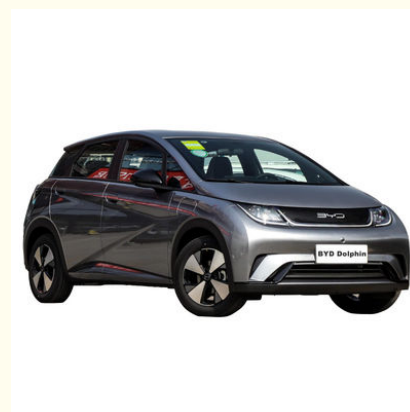
Basic Information

- Place of Origin: Guangdong, China
- Brand Name: BYD
- Model Number: BYD Dolphin
- Minimum Order Quantity: 1
- Price: \$10,500.00/pieces 1-2 pieces
- Delivery Time: 30
- Payment Terms: T/T
- Supply Ability: 100 Piece/Pieces per Month

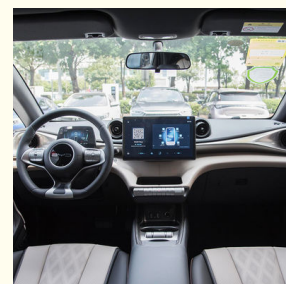


Product Specification

- Steering: Left
- Emission Standard: Euro III
- Engine Capacity: < 4L
- Year: 2023
- Month: 3
- Mileage: 25001-50000 Miles
- Make: BYD
- Type: Sedan
- Fuel: Electric
- Engine Type: Naturally Aspirated
- Cylinders: 4
- Maximum Power(Ps): 100-150Ps
- Gear Box: Automatic
- Forward Shift Number: 4
- Maximum Torque(Nm): 100-200Nm



More Images



for more products please visit us on evcar.cn

Product Description

2023 China Sedans Used BYD Dolphin Electric EV Car New Energy Vehicles

Zero-emission vehicle: The BYD Dolphin Electric EV Car runs entirely on electricity, resulting in zero emissions and contributing to a cleaner environment.

Long driving range: With advanced battery technology, the Dolphin Electric EV Car offers an impressive driving range that ensures long-distance travel without the need for frequent recharging.

Fast charging capability: Equipped with fast-charging technology, this electric car can be charged quickly, reducing the time spent waiting at charging stations.

Smart and spacious interior: The Dolphin Electric EV Car features a smart and spacious interior design, providing comfort and convenience for both driver and passengers.

Cutting-edge safety features: This electric car is equipped with cutting-edge safety features, ensuring the highest level of protection for the occupants.

Product Description



BYD Dolphin

	301KM model	405KM model
Type	Sedan	Sedan
Drive	Pure electric	Pure electric
Time to market	2021.08	2021.08
NEDC Max. Range	301KM	405KM
Fast charge time (hours)	0.5	0.5

Slow charge time (hours)	-	-
Fast charge percentage	80	80
Maximum power (KW)	70	70
Motor (ps)	95	95
Maximum torque (N.m)	180	180
L*W*H(mm)	4070*1770*1570	4215*1770*1570
Body structure	5-door 5-seat	5-door 5-seat
Wheelbase (mm)	2700	2700
Motor type	Front PM/Sync	Front PM/Sync
Motor total power (kWh)	30.7	44.9
Battery Type	Lithium iron phosphate battery	Lithium iron phosphate battery
Front tire specification	195/60 R16	195/60 R16
Rear tire specification	195/60 R16	195/60 R16



Product details



BYD Dolphins get pure electric 95Ps horsepower motor drive, engine backup support, maximum speed of 150km/h, zero hundred acceleration time of 3.9s, electric energy equivalent fuel consumption of 1.2L/100km, good economic performance, which has a better effect on restraining the use cost



Cockpit



Operation Panel



LCD and Reversing Image



Front Seats



Rear Seats



Trunk



Gear Adjustment



Switch Key Of Economic
Mode And Sport Mode



Tire Pressure Monitoring



NEW ENERGY VEHICLE CHARGING



CooperativeFactory



FAQ

Q: Which brands of electric cars are you selling?

A: As a 20-year professional used car seller, we offer BYD,XPENG,NIO,Tesla,Volkswagen and all other brands that are manufactured or sold in China.

Q: Which payment terms do you accept?

A: We're flexible for payment terms, including T/T and Western-Union.

Q: What's the minimum order quantity?

A: 1 unit.

Q: What's the shipping type and how long will the delivery be?

A: By sea or by Train. Normally the delivery time is within 15 to 25 days, after receiving your deposit or L/C.

Q: Do you offer guarantee for the products? :

A:Yes, we offer 1 year warranty to our products.



Shenzhen Chetianxia New Energy Vehicle Technology Co., Ltd.



15323715629



1256265179@qq.com



evcar.cn

3F307, Building 5-8, Jinxiu Jiangnan Phase 4, Xinniu Community, Minzhi Street, Longhua District, Shenzhen City (Jinxiu Mingcheng)