

## 2024 BMW ix1 Electric Car SUV 25i New Energy Vehicles EV Cars Pure

Our Product Introduction

for more products please visit us on [evcar.cn](http://evcar.cn)

### Basic Information

- Place of Origin: Shenzhen
- Brand Name: BMW
- Model Number: BMW IX1
- Minimum Order Quantity: 1
- Price: 22360-31250
- Packaging Details: Normal
- Delivery Time: 15
- Payment Terms: T/T
- Supply Ability: 10



### Product Specification

- Doors: 4
- Exterior Rearview Mirror: Electric Adjustment
- Body Type: SUV
- Gear Box: Automatic
- Energy Type: Pure
- Availability: Currently Available
- Battery Type: Lithium Iron Phosphate Battery
- Air Conditioner: Automatic
- Highlight: **BMW ix1 New Energy Vehicles,  
Pure BMW ix1 Electric Car SUV,  
25i BMW ix1 Electric Car SUV**



### More Images



## Product Description

### Product Description:

The BMW SUV 30 eDrive 25i ix1 Electric Car is a powerful new addition to BMW's line of electric cars. Featuring advanced eDrive technology, this car is built to get the most out of every electric charge.

With a range of up to 273 miles, the BMW SUV 30 eDrive 25i ix1 Electric Car is perfect for daily commuting and weekend road trips. Its electric motor delivers 286 horsepower, making acceleration quick and smooth. Plus, with all-wheel drive capabilities, this car can tackle any terrain with ease.

The design of the BMW SUV 30 eDrive 25i ix1 Electric Car is impressive, with sleek lines and sporty contours. The spacious interior is filled with modern features, including a high-tech infotainment system and premium sound system. Plus, with ample cargo space, you can take everything you need with you on your next adventure.

Overall, the BMW SUV 30 eDrive 25i ix1 Electric Car is an excellent choice for anyone looking for a stylish, powerful, and environmentally-friendly vehicle. It's sure to turn heads wherever you go, and with its efficiency and performance, you'll be able to enjoy the ride like never before.

## Products Description



### Features:

Introducing the BMW SUV 30 eDrive 25i ix1 Electric Car - the perfect combination of luxury, efficiency, and sustainability. With its innovative electric drive system, this car offers a smooth and powerful driving experience while significantly reducing emissions and maximizing fuel economy.

Boasting a 25i battery capacity, the BMW SUV 30 eDrive is designed to deliver an impressive range on a single charge, making it an ideal choice for daily commuting and longer road trips. The car's advanced technology enables it to charge quickly and efficiently, ensuring that you spend less time at the charging station and more time on the road.

The BMW SUV 30 eDrive is also equipped with a range of safety and convenience features, including state-of-the-art driver assistance systems, parking sensors, and a rearview camera. Its sleek and stylish design is sure to turn heads and make a bold statement wherever you go.

Experience the future of driving with the BMW SUV 30 eDrive 25i ix1 Electric Car. Contact us today to schedule a test drive and see for yourself why BMW is the ultimate driving machine.

BMW SUV 30 eDrive 25i ix1 Electric Car

Introducing the BMW SUV 30 eDrive 25i ix1 Electric Car - the perfect combination of luxury, efficiency, and sustainability. With its innovative electric drive system, this car offers a smooth and powerful driving experience while significantly reducing emissions and maximizing fuel economy.

Boasting a 25i battery capacity, the BMW SUV 30 eDrive is designed to deliver an impressive range on a single charge, making it an ideal

choice for daily commuting and longer road trips. The car's advanced technology enables it to charge quickly and efficiently, ensuring that you spend less time at the charging station and more time on the road.

The BMW SUV 30 eDrive is also equipped with a range of safety and convenience features, including state-of-the-art driver assistance systems, parking sensors, and a rearview camera. Its sleek and stylish design is sure to turn heads and make a bold statement wherever you go.

Experience the future of driving with the BMW SUV 30 eDrive 25i ix1 Electric Car. Contact us today to schedule a test drive and see for yourself why BMW is the ultimate driving machine.







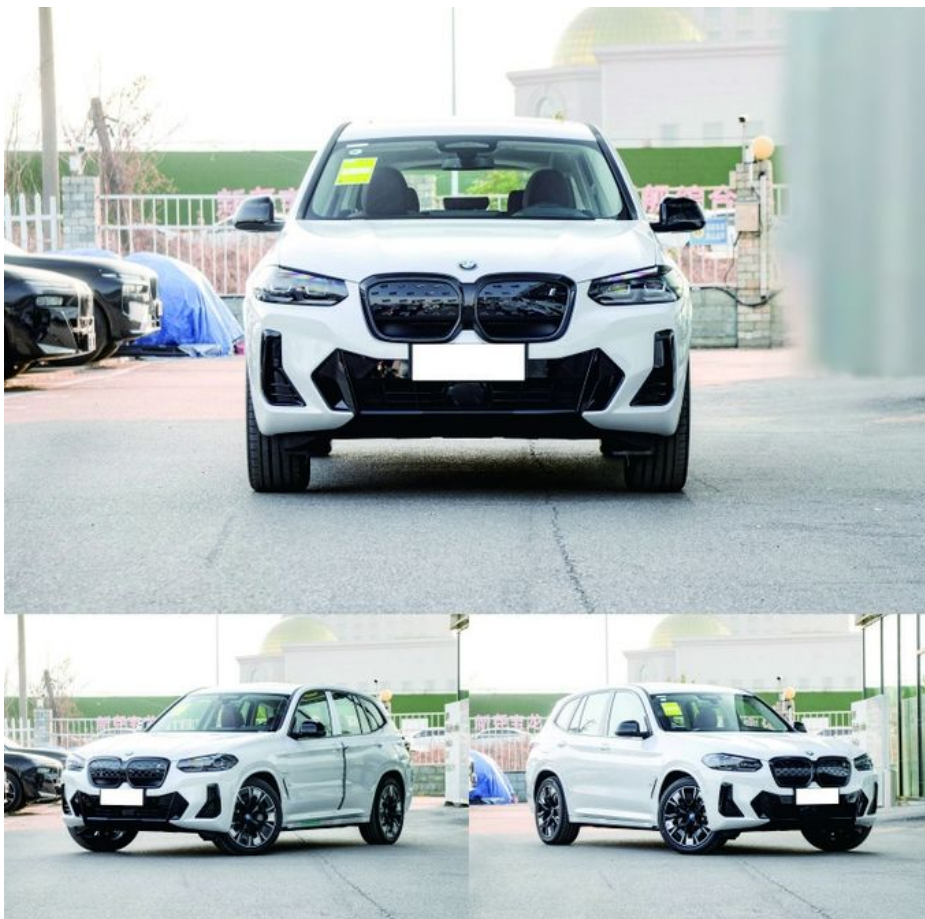
### Technical Parameters:

The BMW SUV 30 eDrive 25i ix1 Electric Car is a modern and innovative vehicle that is designed to offer exceptional performance and efficiency. This car is perfect for anyone who wants to reduce their carbon footprint while enjoying a comfortable and luxurious ride. The BMW SUV 30 eDrive 25i ix1 Electric Car is powered by a state-of-the-art electric motor that delivers impressive power and torque. With a top speed of 124 mph and an acceleration time of just over 6 seconds, the BMW SUV 30 eDrive 25i ix1 Electric Car combines speed and efficiency like no other car on the market.

One of the best things about the BMW SUV 30 eDrive 25i ix1 Electric Car is its eco-friendly design. This car emits zero emissions, making it a great choice for those who are concerned about the environment.

The interior of the BMW SUV 30 eDrive 25i ix1 Electric Car is spacious, luxurious, and tech-packed. The car comes with a variety of features such as a panoramic sunroof, heated seats, a high-tech infotainment system, and much more.

The BMW SUV 30 eDrive 25i ix1 Electric Car is a modern and innovative vehicle that is designed to offer exceptional performance and efficiency. This car is perfect for anyone who wants to reduce their carbon footprint while enjoying a comfortable and luxurious ride. -> The BMW SUV 30 eDrive 25i ix1 Electric Car is powered by a state-of-the-art electric motor that delivers impressive power and torque. With a top speed of 124 mph and an acceleration time of just over 6 seconds, the BMW SUV 30 eDrive 25i ix1 Electric Car combines speed and efficiency like no other car on the market. -> One of the best things about the BMW SUV 30 eDrive 25i ix1 Electric Car is its eco-friendly design. This car emits zero emissions, making it a great choice for those who are concerned about the environment. -> The interior of the BMW SUV 30 eDrive 25i ix1 Electric Car is spacious, luxurious, and tech-packed. The car comes with a variety of features such as a panoramic sunroof, heated seats, a high-tech infotainment system, and much more. ->



### Applications:

Looking for a luxury electric SUV? Consider the BMW SUV 30 eDrive 25i ix1 Electric Car for top-of-the-line performance and impressive features.

The BMW SUV 30 eDrive boasts a 25-liter engine that offers efficient and powerful acceleration, while its electric motor provides a quiet and smooth ride.

Some of the standout features of this electric car include its spacious interior, advanced safety features, and intuitive infotainment system. Whether you are looking for a family-friendly vehicle or simply a luxurious ride for yourself, the BMW SUV 30 eDrive 25i ix1 Electric Car is a great choice for anyone seeking a reliable, high-quality electric car that delivers on both style and substance.

### Customization:

Customize your BWM IX1 Fully Electric SUV:

Brand Name: BWM

Model Number: BWM IX1

Place of Origin: Shenzhen

Minimum Order Quantity: 1

Price: 22360-31250

Packaging Details: Normal

Delivery Time: 15

Payment Terms: T/T

Supply Ability: 10

Battery Type: Lithium Iron Phosphate Battery

Gear Box: Automatic

Seats Material: Leather

Transmission: Automatic

Energy Type: Pure

The BWM IX1 Fully Electric SUV is an excellent choice for those seeking a high-quality electric vehicle. With its Lithium Iron Phosphate Battery and Automatic Transmission, this vehicle provides a smooth and efficient ride. The seats are made of high-quality leather, ensuring maximum comfort. Order your BWM IX1 today and experience the future of transportation.



**Shenzhen Chetianxia New Energy Vehicle Technology Co., Ltd.**

☎ 15323715629

✉ 1256265179@qq.com

🌐 evcar.cn

3F307, Building 5-8, Jinxiu Jiangnan Phase 4, Xinniu Community, Minzhi Street, Longhua District, Shenzhen  
City (Jinxiu Mingcheng)